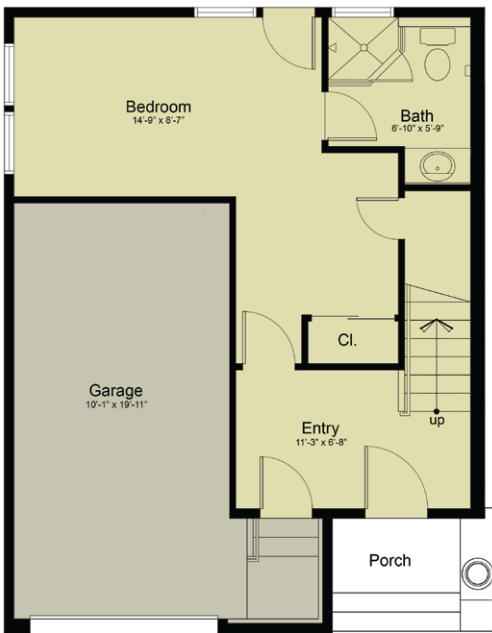




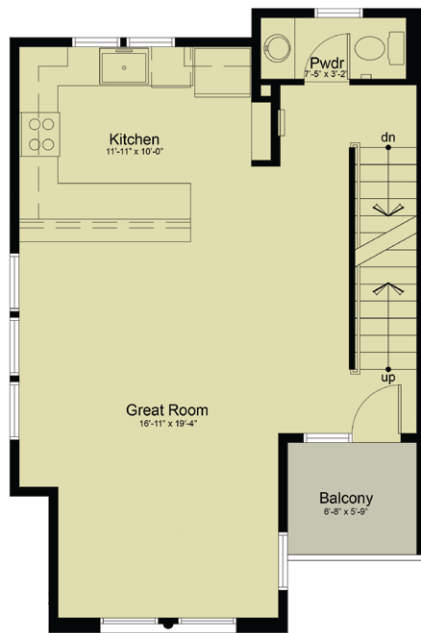
OLD CHURCH PLACE

FLOOR PLAN - UNIT A

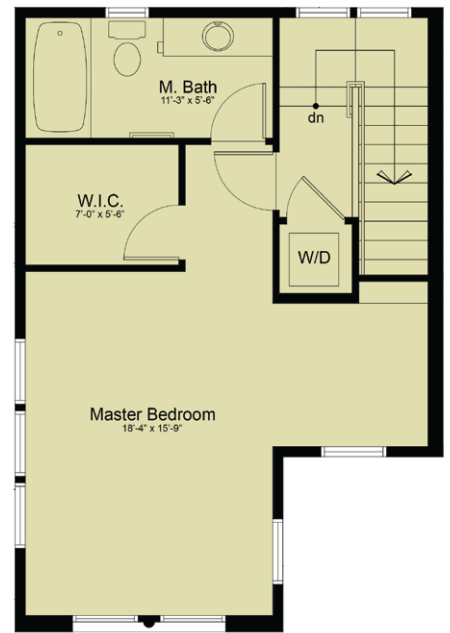
1,361 sq. ft.



1ST FLOOR



2ND FLOOR



3RD FLOOR

COME VISIT THE PLACE YOU WILL WANT TO LIVE, WORK, AND PLAY.

Chris Richardson (805) 801-9091 Amanda Dunton (805) 458-7914

CHRISTIE'S
INTERNATIONAL REAL ESTATE



RICHARDSON
PROPERTIES

BRE # 01465507

We Reserve The Right To Change Price, Design, And Specifications Without Prior Notice Or Obligation. Size, Number, Location Of Windows, And Patios Vary Per Unit. All Information Is Subject To Change. All Imagery Is Representational And Does Not Depict Specific Building Or Future Amenity Details. Views Will Vary Per Unit Location. November 13, 2014

info@oldchurchplace.com

— OR —

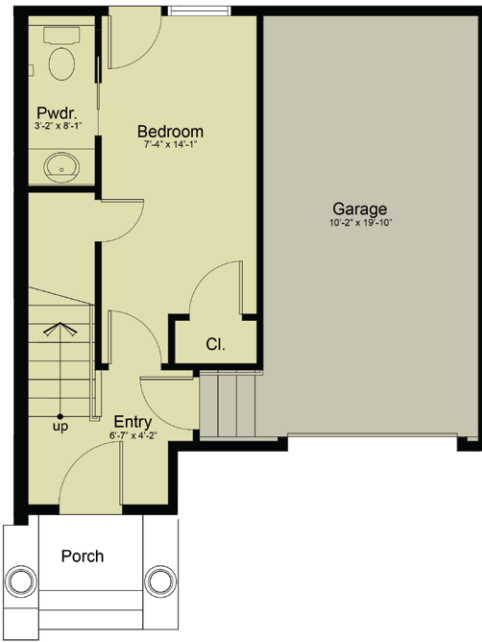
CALL (805) 781-6040



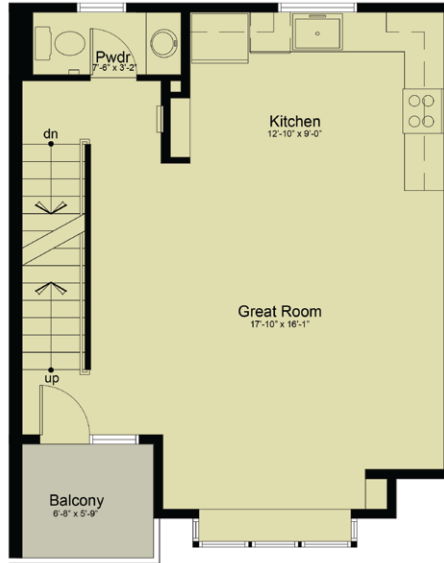
OLD CHURCH PLACE

FLOOR PLAN - UNIT B

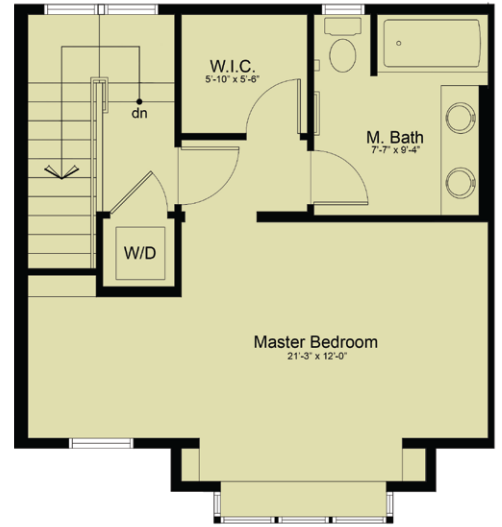
1,277 sq. ft.



1ST FLOOR



2ND FLOOR



3RD FLOOR

COME VISIT THE PLACE YOU WILL WANT TO LIVE, WORK, AND PLAY.

Chris Richardson (805) 801-9091 Amanda Dunton (805) 458-7914

CHRISTIE'S
INTERNATIONAL REAL ESTATE



RICHARDSON
PROPERTIES

BRE # 01465507

We Reserve The Right To Change Price, Design, And Specifications Without Prior Notice Or Obligation. Size, Number, Location Of Windows, And Patios Vary Per Unit. All Information Is Subject To Change. All Imagery Is Representational And Does Not Depict Specific Building Or Future Amenity Details. Views Will Vary Per Unit Location. November 13, 2014

info@oldchurchplace.com

OR

CALL (805) 781-6040